

A PART OF SECTIONS 3,4,9, & 10, T.6N., R.2E., S.L.B. & M.
GREEN HILL COUNTRY ESTATES PHASE NO. 6

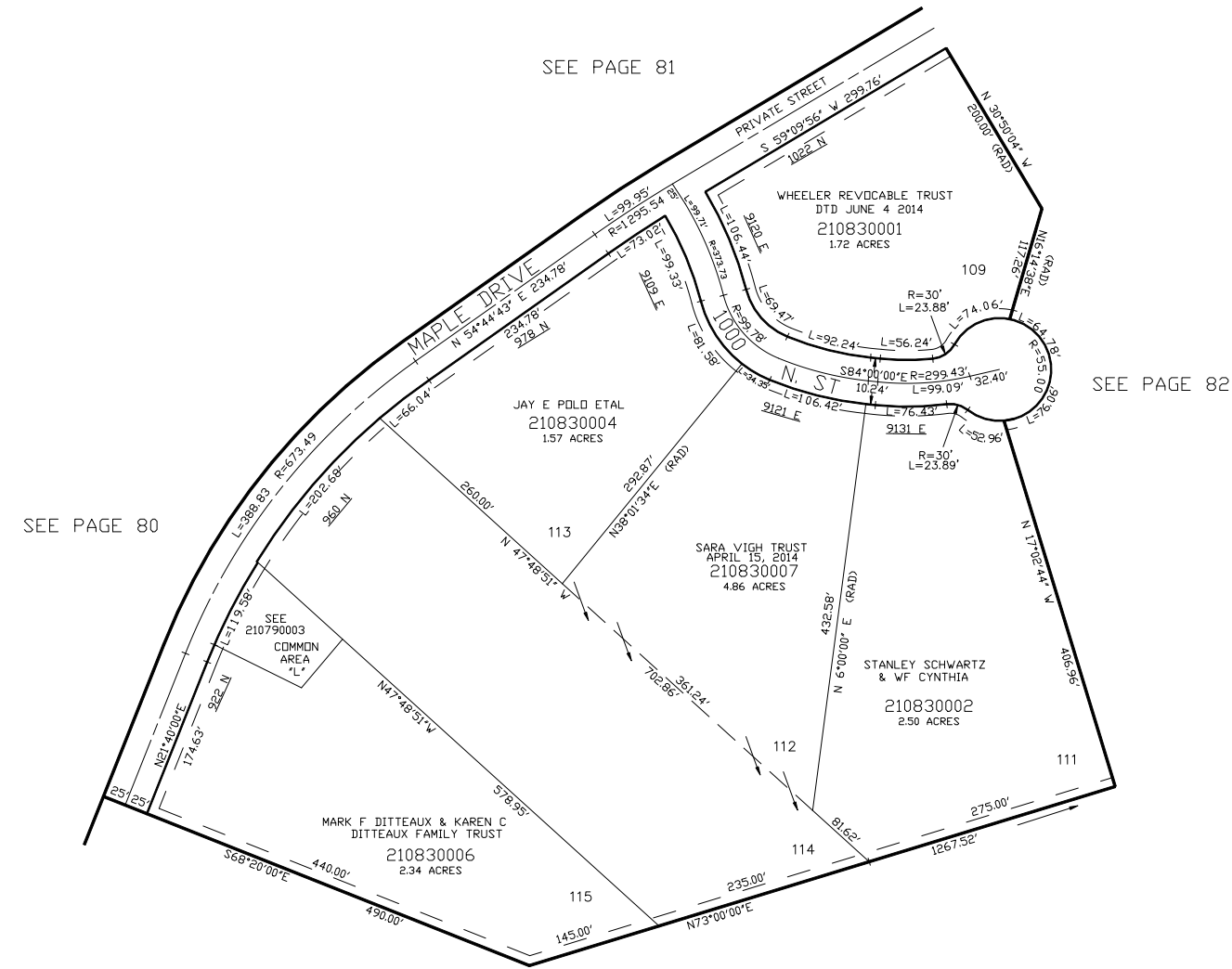
A CLUSTER TYPE SUBDIVISION

IN WEBER COUNTY

SCALE 1" = 100'

TAXING UNIT: 231

FOR NON-BUILDABLE AREAS,
 SLIDE AREAS, DRAINAGE EASEMENT,
 AND EXISTING DRAINAGE SWALE.
 SEE DEDICATION PLAT.



10' UTILITY & DRAINAGE EASEMENTS EACH
 SIDE OF PROPERTY LINES AS INDICATED
 BY DASHED LINES EXCEPT AS OTHERWISE
 SHOWN.

FOR COMPLETE ENG DATA SEE
 ORIGINAL DEDICATION PLAT IN
 BOOK 48, PAGE 64-66 OF RECORDS.

FOR TAX PURPOSES ONLY